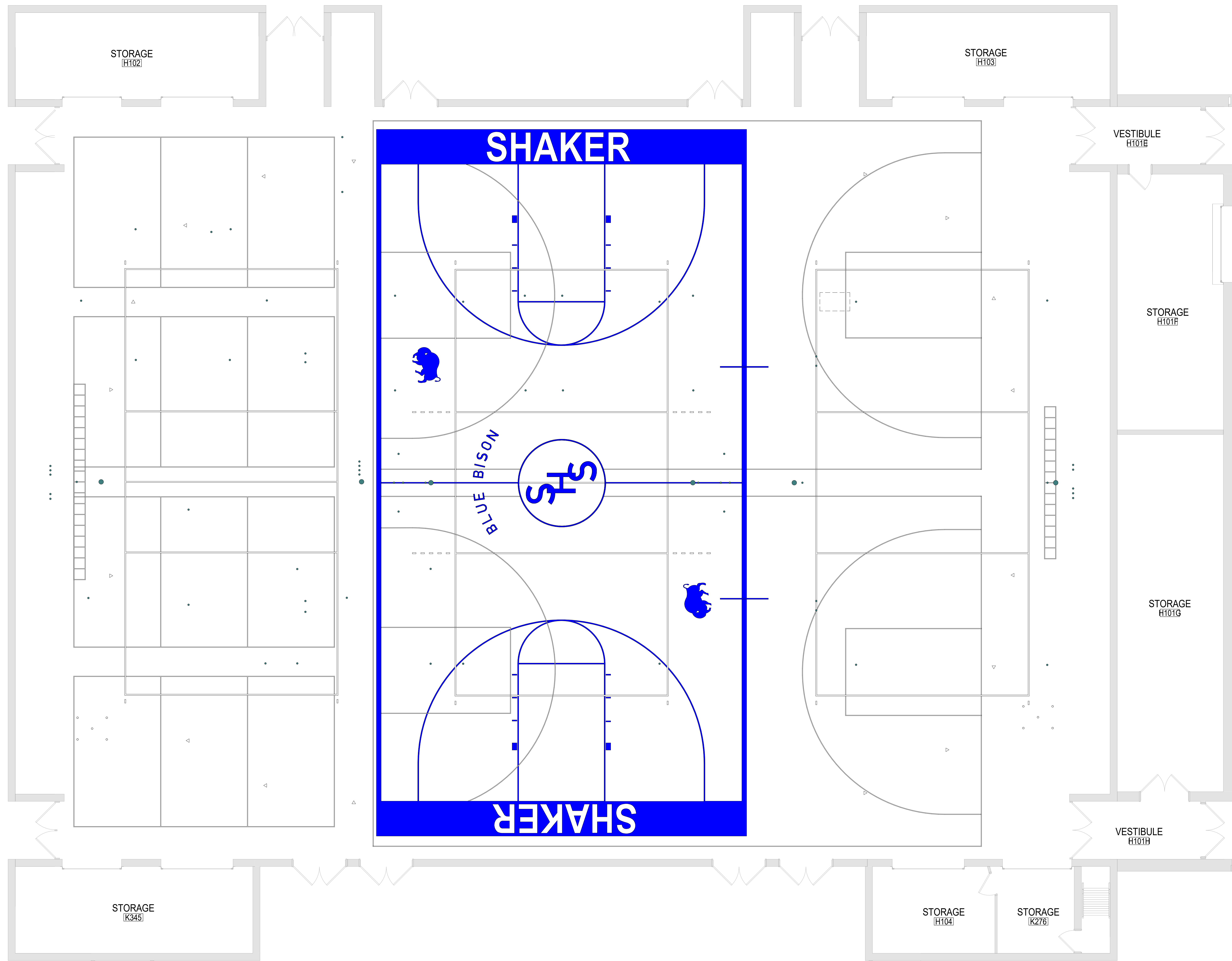


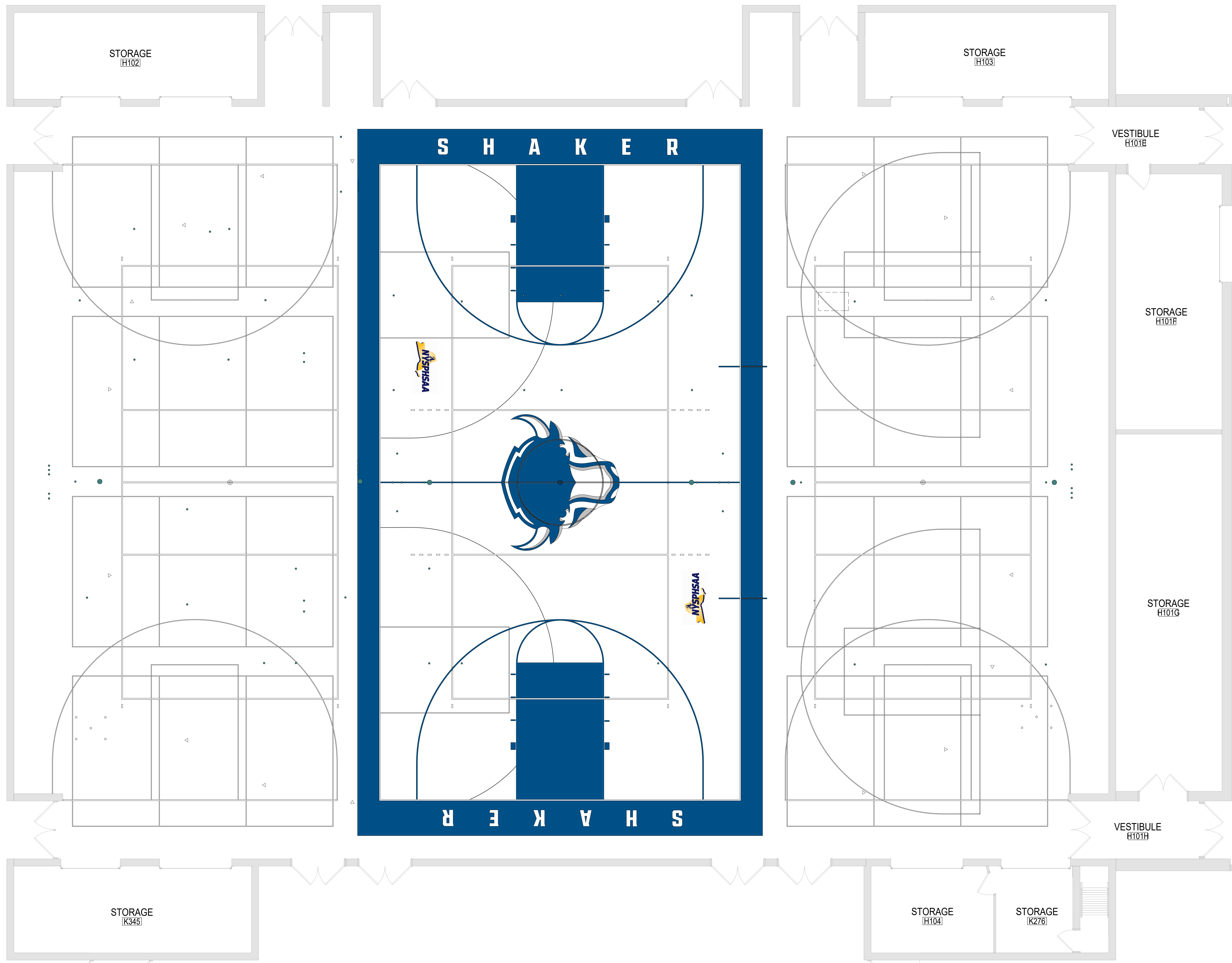
SHS gym line repainting/refinish bid clarifications from 4/3/24 pre-bid walk through

- Equipment and storage areas are not considered part of the job scope.
- Areas of the main court that lead to exterior doors are part of the job scope.
- Base trim along edges will not need to be sanded by the contractor. It will need to be coated with the floor finish.
- Painted lines – Full coverage of the floor by the color will be required. Please submit the amount of coats of paint you intend to use for each color.
- 3 phase 208 volt power will be made available. There is plenty of power in the gym for multiple feeds.
- There was a question about the note in the bid documents referring to daily clean up procedures.
 - This note is only meant to prevent excessive buildup of garbage and debris. You will not have to remove your equipment and clean up the area completely on a daily basis.
- The flooring contractor is responsible to cover and protect the bleachers.
- The contractor will supply their own dumpster.
 - We require 2 x 10 or 2 x 12 wood boards to be placed under the dumpster will be placed if it is going to be placed on pavement or concrete.
- The center court Bison and NYSPHSAA images need to be submitted to the school district and approved before being applied to the floor.
- A bid bond is not required for this bid.
- Work will start on July 15th and needs to be completed by August 25th.
 - The completion date is a slight change to what was mentioned at the walk through.



1 EXISTING OVERALL H-GYM STRIPING PLAN
 P001 3/16" = 1'-0"

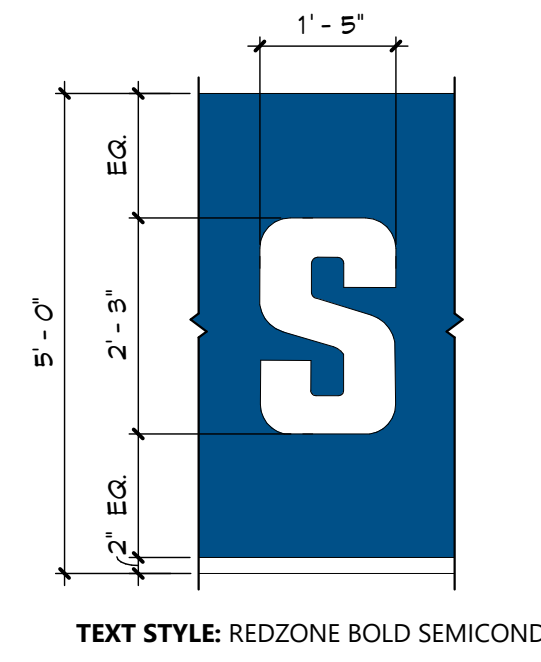
NOTE: EXISTING MEASURED TO CENTER OF ATHLETIC LINES.



1 NEW OVERALL H-GYM STRIPING PLAN
 P002 3/16" = 1'-0"

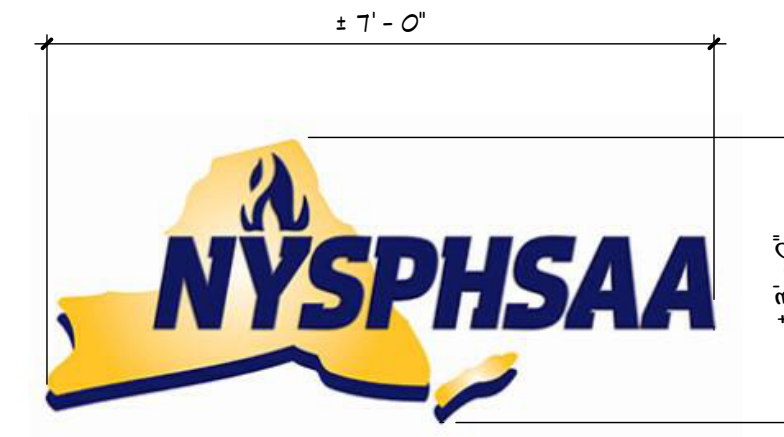
NORTH COLONIE CENTRAL SCHOOL DISTRICT,
SHAKER HIGH SCHOOL

- NOTES:**
1. MEASURED TO CENTER OF ATHLETIC LINES. LINES TO BE PAINTED 2" IN WIDTH UNLESS NOTED OTHERWISE.
 2. ATHLETIC LINES TO BE PAINTED BASED OFF CENTER OF BASKETBALL HOOP LOCATION.
 3. CENTER COURT SHAKER BISON AND NYSFHSAA LOGO TO BE SUBMITTED FOR FINAL APPROVAL AND SIGNED OFF BY NORTH COLONIE SCHOOL DISTRICT.
 4. MAIN BASKETBALL COURT CENTER COURT AND CIRCLE LINES ARE TO BE 1/2" AND TRANSPARENT AT SHAKER BISON LOGO. LINES THAT FALL OUTSIDE THE LOGO ARE TO BE PAINTED TO DEFINE CENTER CIRCLE.
 5. EXISTING FLOOR POLE CONNECTIONS TO REMAIN.
 6. ALL ADDITIONAL GYM FLOOR MARKINGS SHOWN ARE TO REMAIN AT EXISTING LOCATIONS AND PAINTED WHITE.

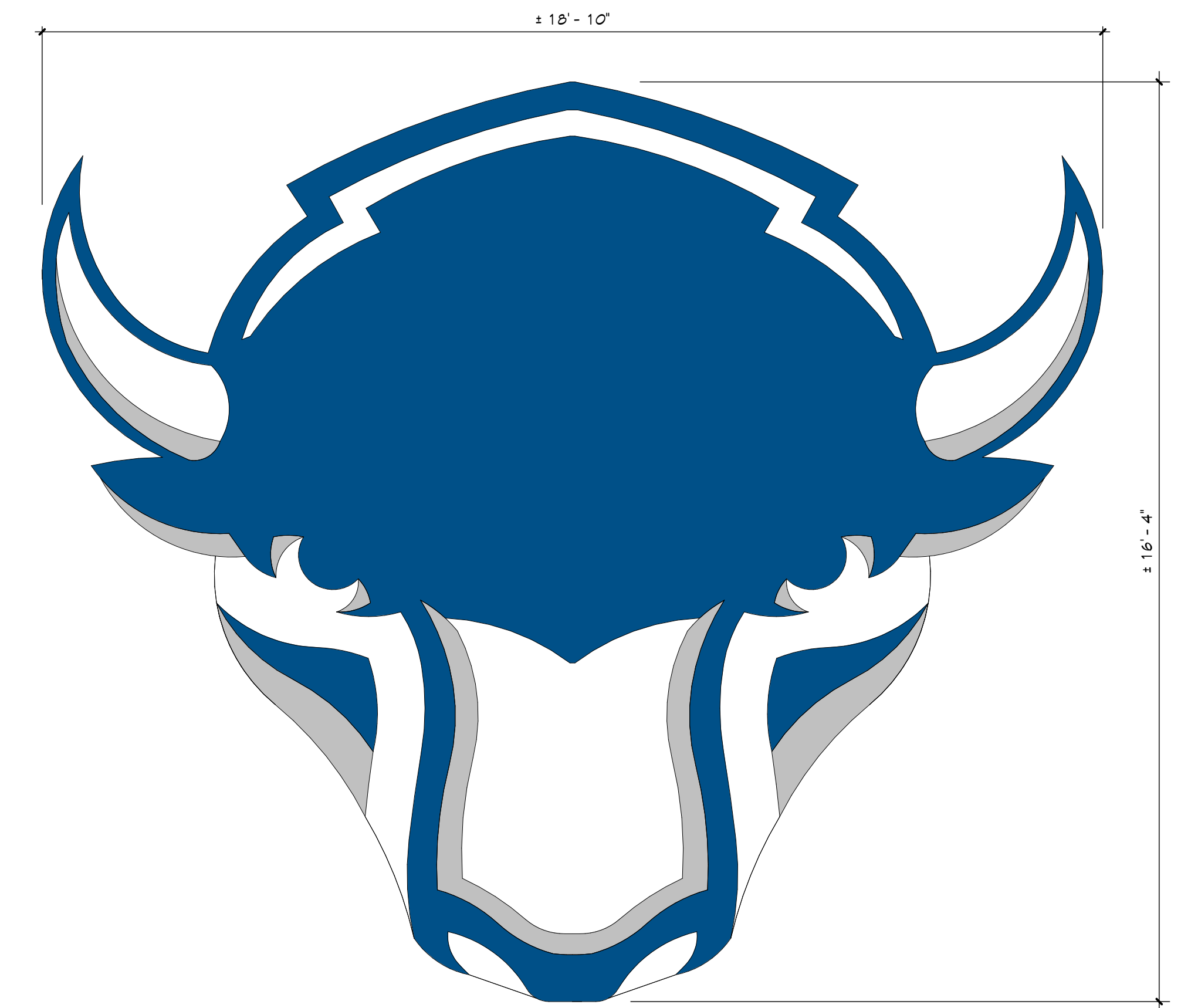


TEXT STYLE: REDZONE BOLD SEMICOND

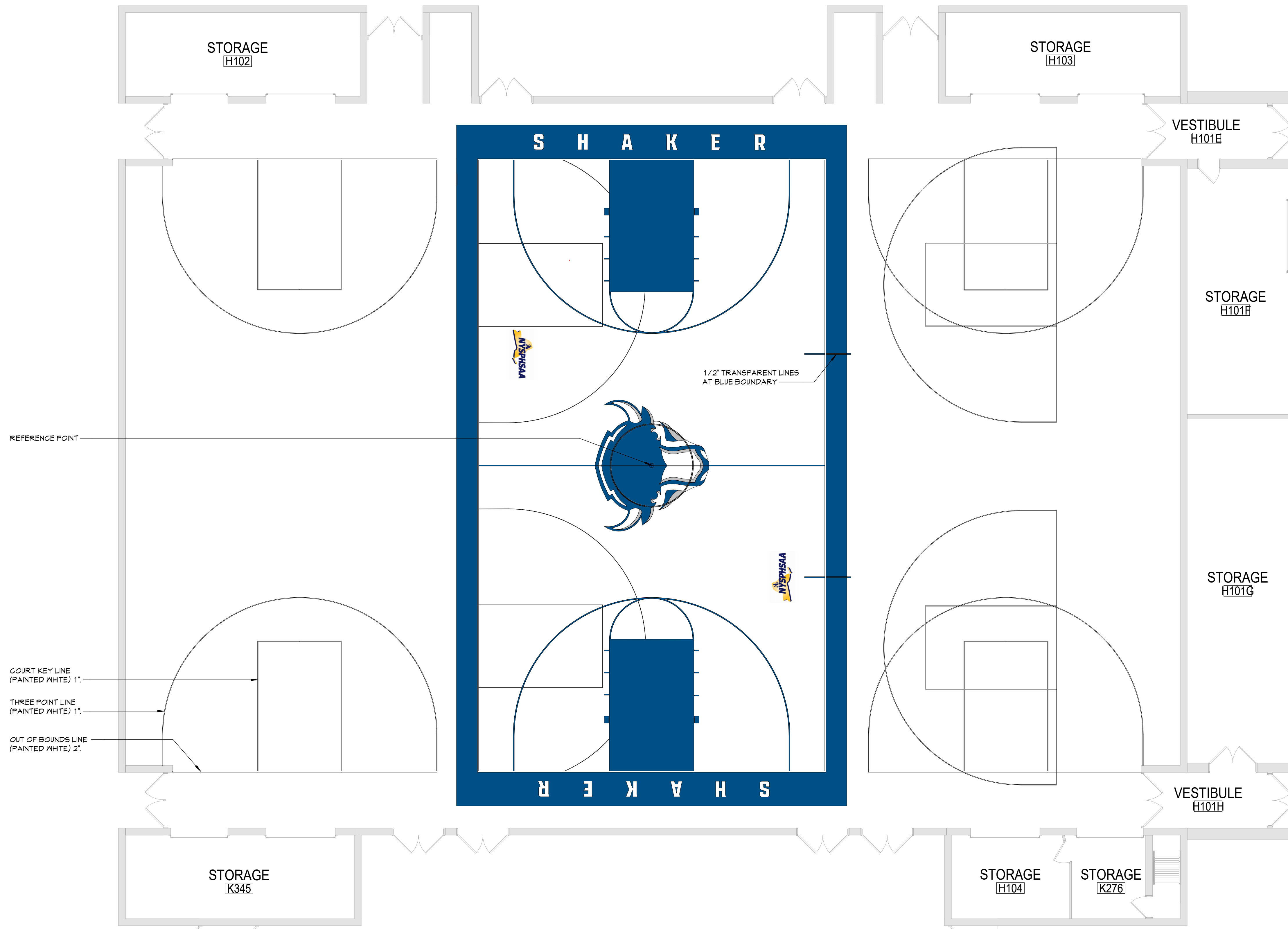
5 SHAKER BANNER LETTERING
P003 1/2" = 1'-0"



4 NYSPHSAA LOGO
P003 1/2" = 1'-0"

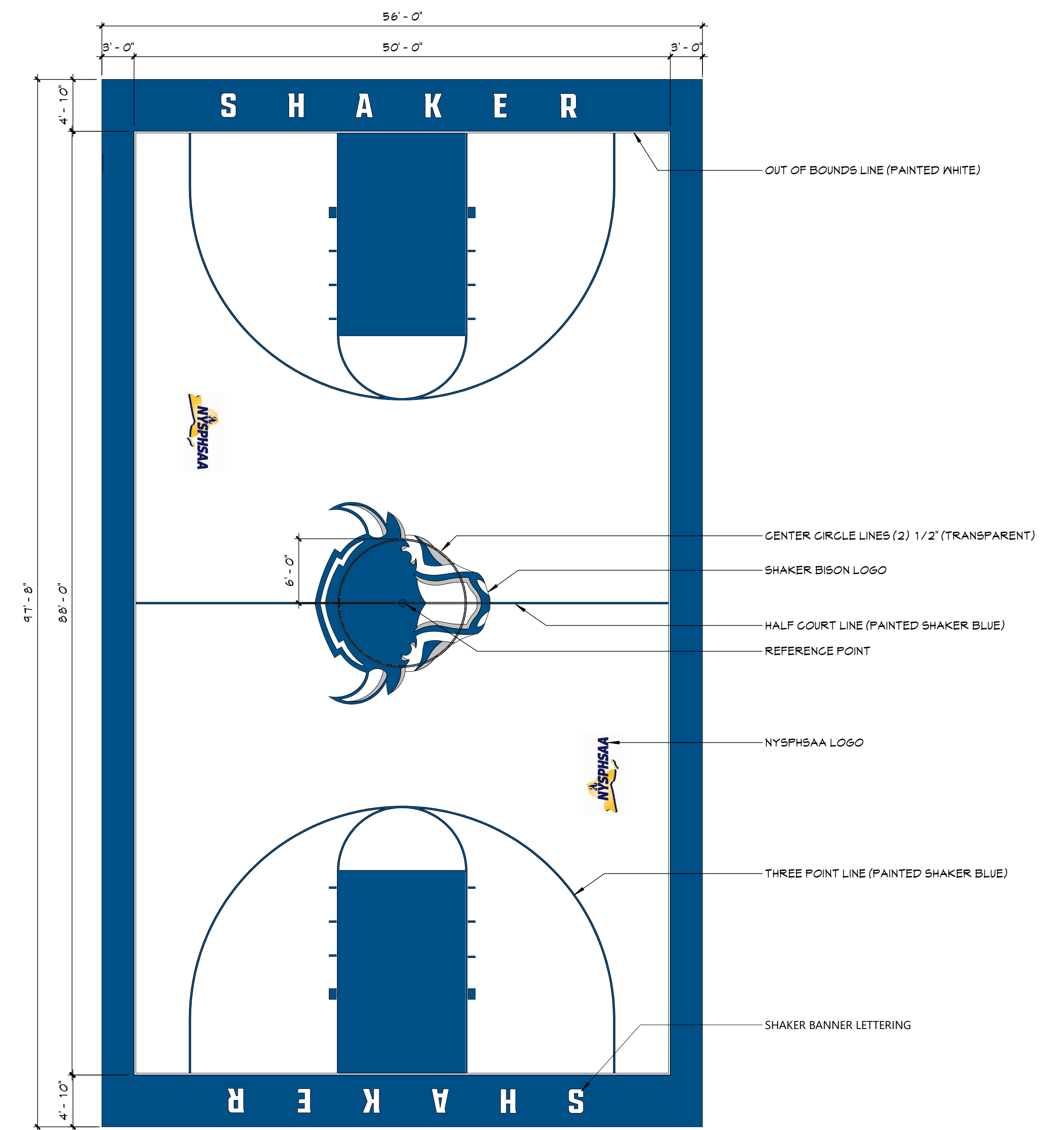


3 SHAKER BISON LOGO
P003 1/2" = 1'-0"



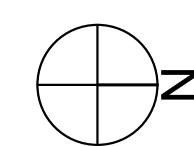
2 SECONDARY COURT LAYOUT - H GYM
P003 1/8" = 1'-0"

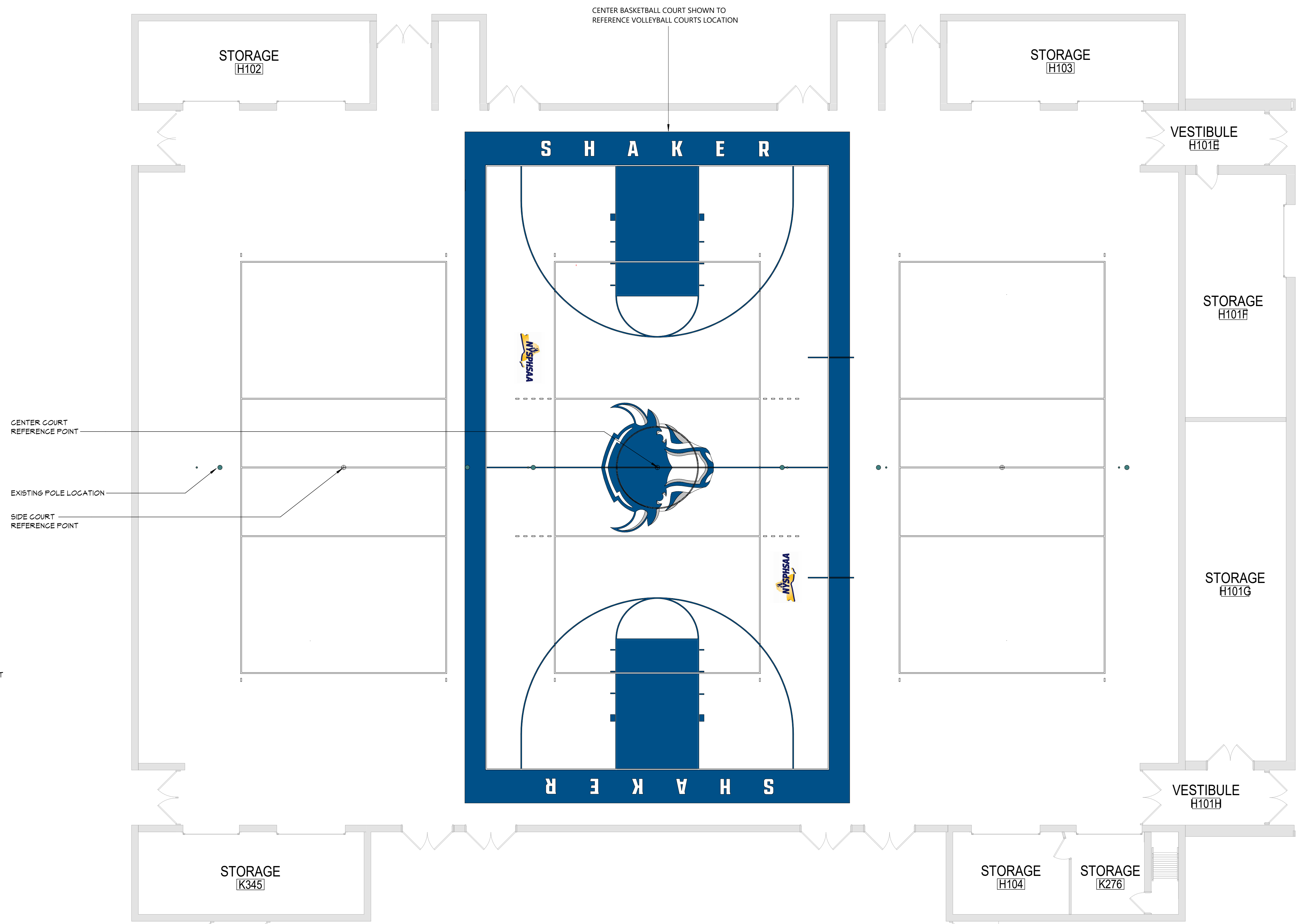
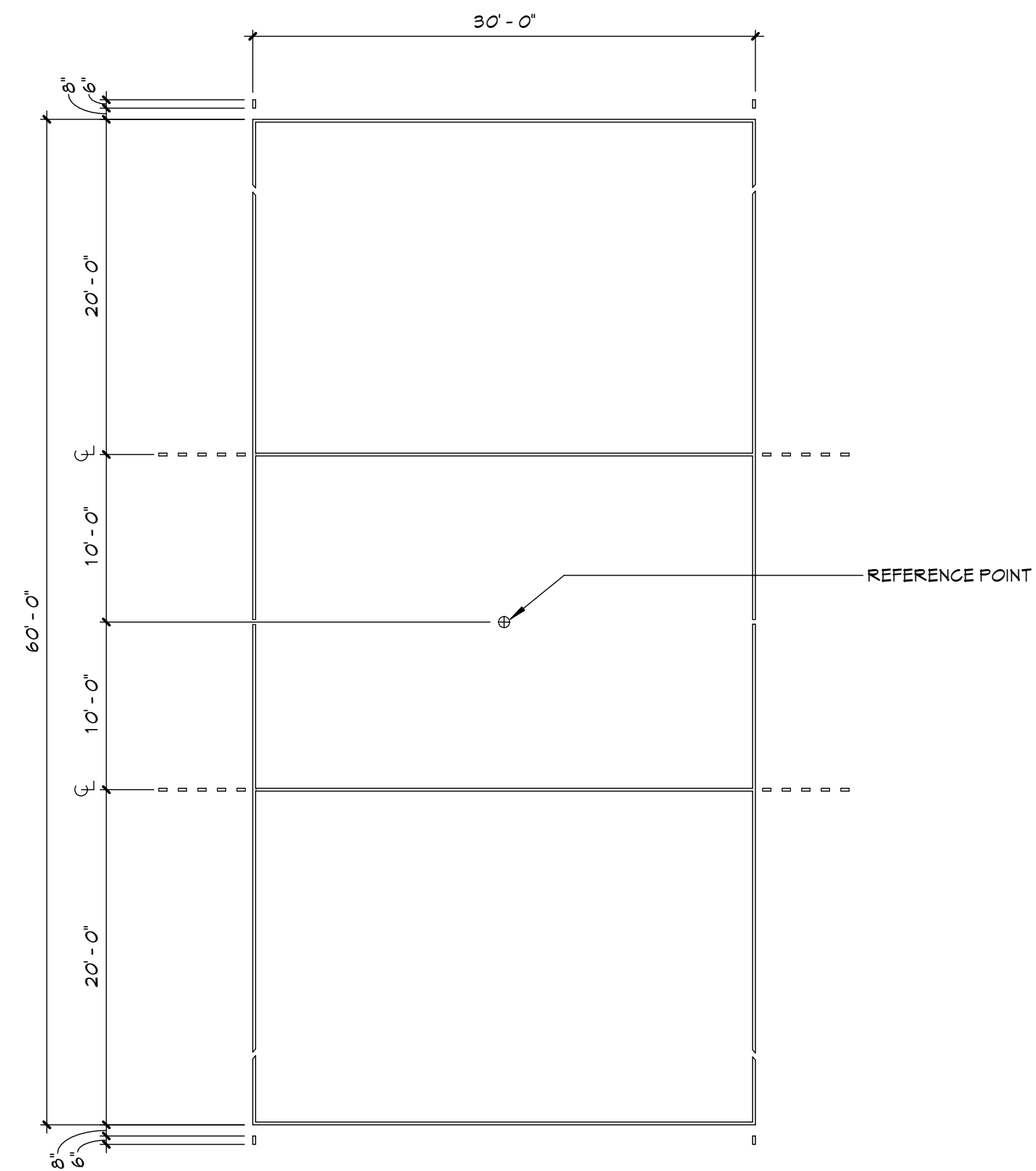
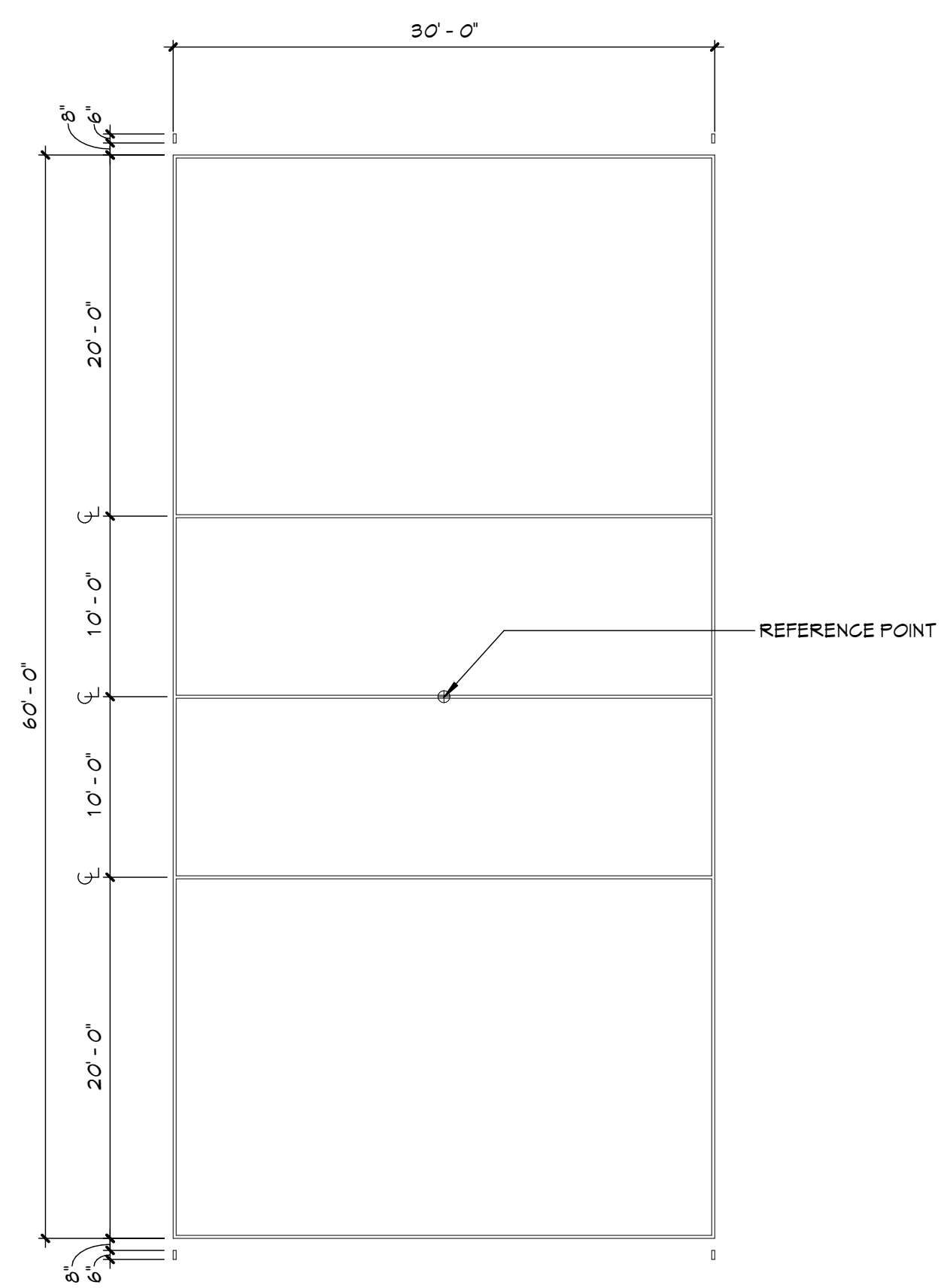
- SECONDARY BASKETBALL COURT NOTES:**
1. SECONDARY BASKETBALL COURT LINES ARE TO BE 1" WIDE.
 2. SECONDARY BASKETBALL COURT LINES ON MAIN BASKETBALL ONLY TO BE 1/2" WIDE.
 3. SECONDARY BASKETBALL COURT LINES TO BE PAINTED BASED OFF CENTER OF EXISTING BASKETBALL HOOP LOCATIONS.
 4. ALL SECONDARY BASKETBALL COURT LINES ARE TO BE PAINTED WHITE.



1 MAIN BASKETBALL COURT - H GYM
P003 1/8" = 1'-0"

- MAIN BASKETBALL COURT NOTES:**
1. LINES TO BE PAINTED 2" IN WIDTH UNLESS NOTED OTHERWISE.
 2. ATHLETIC LINES TO BE PAINTED BASED OFF CENTER OF BASKETBALL HOOP LOCATION.
 3. CENTER COURT SHAKER BISON AND NYSPHSAA LOGO TO BE SUBMITTED FOR FINAL APPROVAL AND SIGNED OFF BY NORTH COLONIE SCHOOL DISTRICT.
 4. MAIN BASKETBALL COURT CENTER COURT AND CIRCLE LINES ARE TO BE 1/2" AND TRANSPARENT AT SHAKER BISON LOGO LINES THAT FALL OUTSIDE THE LOGO ARE TO BE PAINTED TO DEFINE CENTER CIRCLE.
 5. BLUE PAINT TO MATCH NORTH COLONIE BRAND GUIDE COLOR PALETTE.



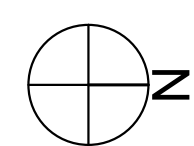


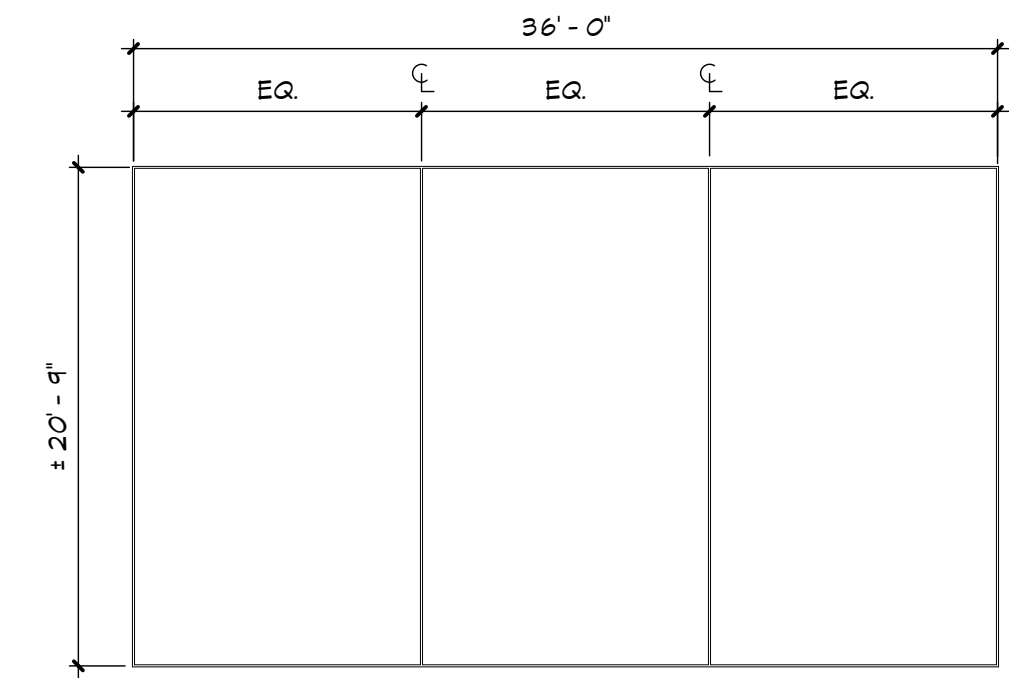
3 VOLLEYBALL COURT SIDE - H GYM
P004 1/8" = 1'-0"

2 VOLLEYBALL COURT CENTER - H GYM
P004 1/8" = 1'-0"

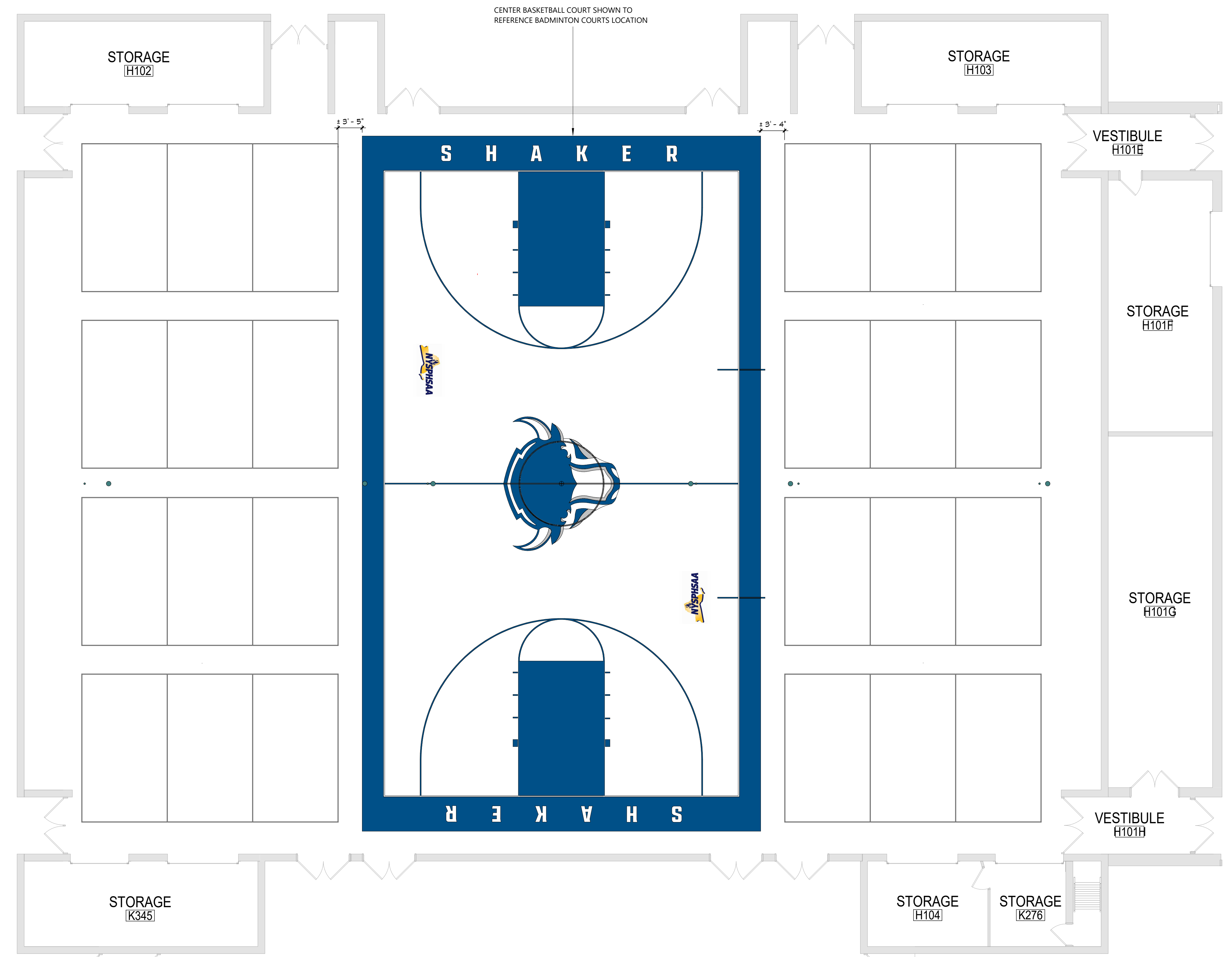
1 VOLLEYBALL COURT LAYOUT - H GYM
P004 1/8" = 1'-0"

- VOLLEYBALL COURT NOTES:**
1. CENTER LINE OF CENTER VOLLEYBALL COURT USES THE BASKETBALL HALF COURT LINE.
 2. VOLLEYBALL COURT LINES ARE TO BE PAINTED WHITE. LINES ARE TO BE 2" WIDE.
 3. VOLLEYBALL COURTS ARE TO BE LOCATED BETWEEN EXISTING POLE LOCATIONS.
 3. EXISTING POLE LOCATIONS IN FLOOR TO REMAIN.





2 BADMINTON COURT
P005 1/8" = 1'-0"



1 BADMINTON COURT LAYOUT - H GYM
P005 1/8" = 1'-0"

BADMINTON COURT NOTES:
 1. BADMINTON COURT SIZING IS BASED OFF OF EXISTING COURT SIZING AND LOCATION. VERIFY FINAL SIZING AND LOCATION OF COURTS IN FIELD PRIOR TO PAINTING.
 2. BADMINTON COURT LINES ARE TO BE 1" WIDE AND PAINTED WHITE.

